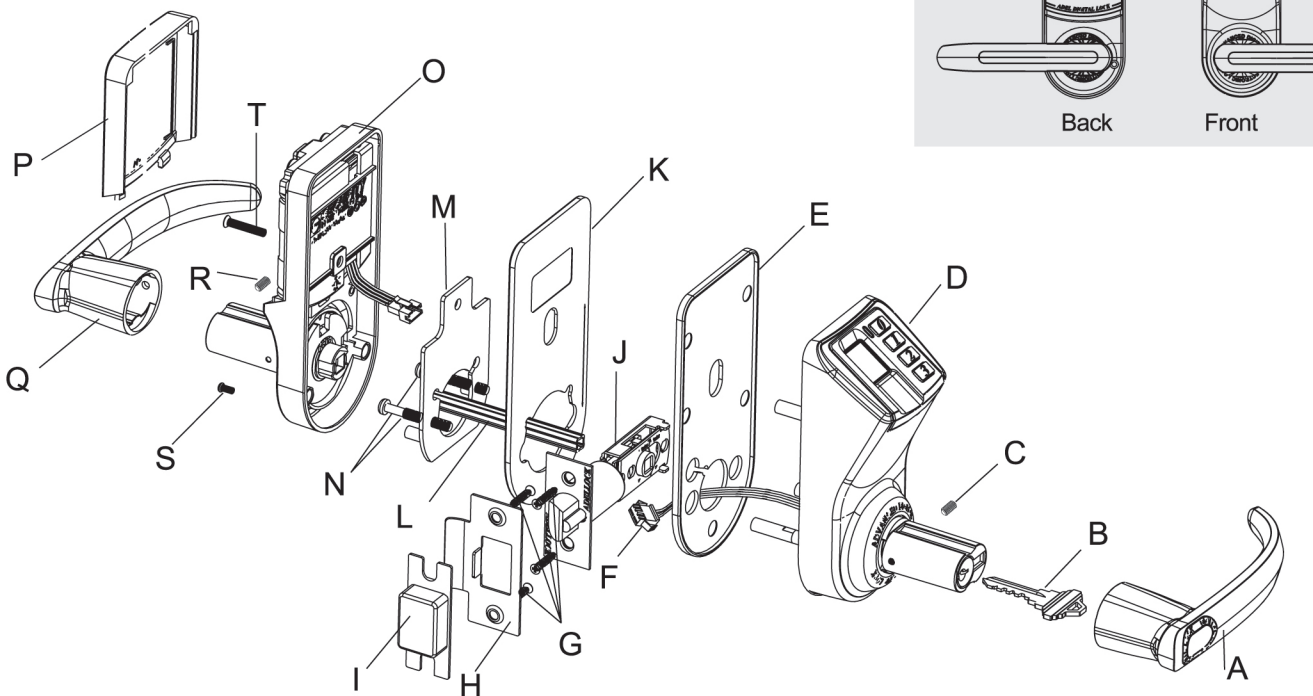


LH9-3 installation instruction

LH9-3安装说明图示

Diagram of lock 门锁结构图



- A、前把手 B、钥匙 C、固定前把手的内六角螺丝（M4*7） D、前锁面 E、前锁面胶垫 F、数据线
G、固定锁芯用尖头螺丝 H、门扣板 I、门扣盒 J、锁芯 K、后锁面后锁 L、方轴
M、安装盖板 N、固定安装盖板用平底螺丝(根据门厚有3种尺寸可选：M5*20 M5*30 M5*30) O、后锁面
P、电池盒盖 Q、后把手 R、固定后把手的内六角螺丝（M4*7） S、固定后把手的内六角螺丝（M4*7）
T、固定后锁面用平底螺丝(根据门厚有3种尺寸可选：M5*20 M5*30 M5*30)

- A. Front lever handle B. Mechanical key C. Hexagonal screws for fixing the front handle（M4*7） D. Front lock body
E. Front lock body gasket F. Wire connector G. Screw H. Strike plate I. Strike box J. Latch
K. Back lock body gasket L. Spindle M. Back plate
N. 3 different set of screws are provided as M5*20, M5*30 and M5*30, in which the screws are used to fix the position of inner metal plate.
O. Back lock body P. Battery cover Q. Back lever handle R. Hexagonal screws for fixing the back handle s. M4*10 screw
T. 3 different set of screws are provided as M5*20, M5*30 and M5*30, in which the screws are used to fix the position of back lock body.

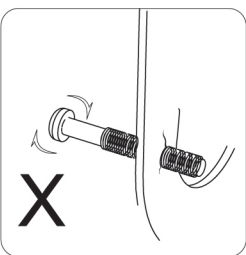
表：螺丝配置表 The table of screws and door thickness

图示序号 Diagram code	数量 Quantity	尺寸 (mm) Size	适合门厚 (in/mm) Appropriate for door thickness
C	1	(M4*7)	
R	1	(M4*7)	
S	2	(M4*10)	1-3/16" - 2-3/8" (30mm - 60mm)
N	2	(M5*20)	1-3/16" - 1-9/16" (30mm - 40mm)
		(M5*30)	1-9/16" - 1-31/32" (40mm - 50mm)
T	1	(M5*40)	1-31/32" - 2-3/8" (50mm - 60mm)

注：N/T螺丝根据门厚的不同来选择不同尺寸的螺丝配置；
Note: N/T please use the appropriate screw set based on your own door thickness.

Notices of the installation 安装注意事项：

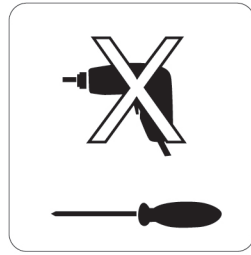
- 1、为保证安装成功，在扭紧螺丝时不要过度用力，以免对锁具造成损伤。
To ensure a successful installation, please do not use power tool to tighten the screws to avoid damage on the screw.



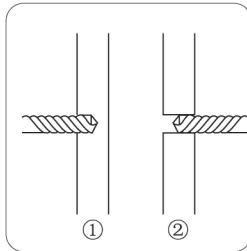
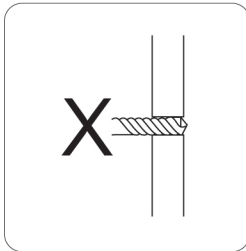
- 3、在进行门洞开孔时请注意佩戴护眼器具，以免对眼睛造成伤害
In order to avoid eye-damage, suggest wearing eye-protection during door-hole drilling.



- 2、要注意选择正确的固定螺丝工具
Please use the correct fixed-screw tool

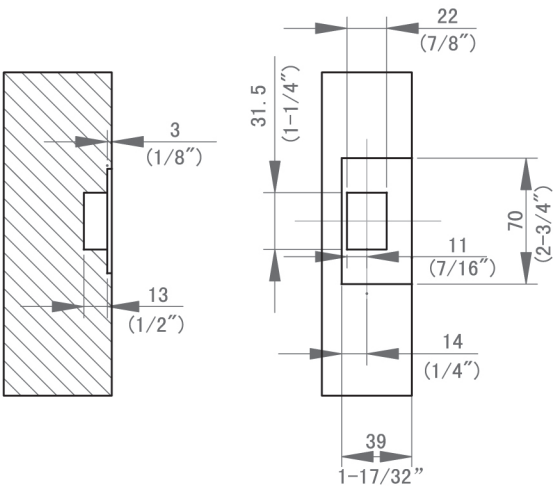


- 4、为防止对门造成不必要的损伤，在进行门洞开孔时请分别从两边进行对开孔，切忌单从一边穿透开孔
In order to prevent any unnecessary damage for the door, please drill the holes from both sides of the door separately.

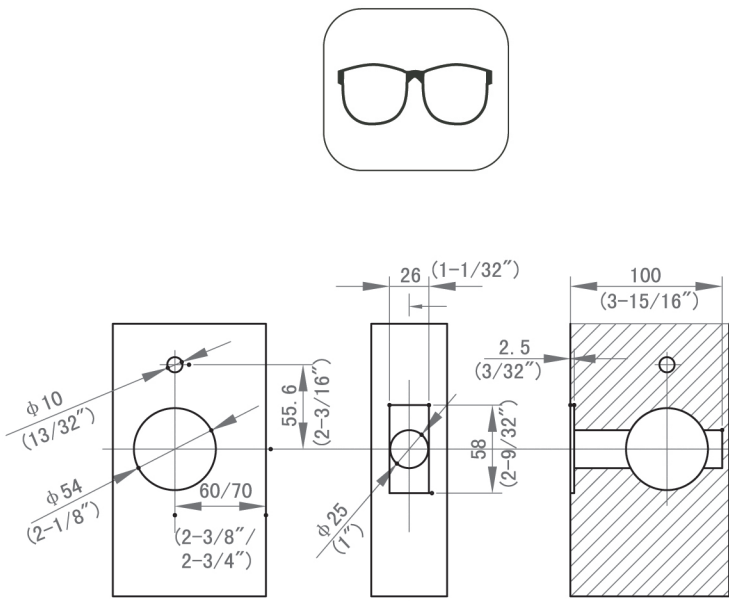


1 Door-drilling 开孔

mm/in



Door frame preparation
门扣板开孔图

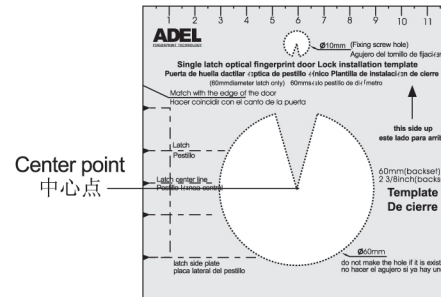


Door-drilling Diagram
门体开孔图

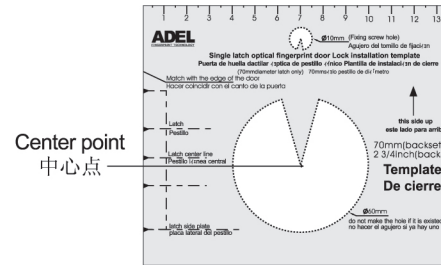
Door and Door frame drilling Diagram
开孔尺寸图

Template for new door 开孔模板

Paper template: the 2 3/8" [60mm] backset or 2 3/4" [70 mm] backset
有60mm及70mm两种规格



2 3/8" [60mm] backset 2 3/8" [60mm] 模板

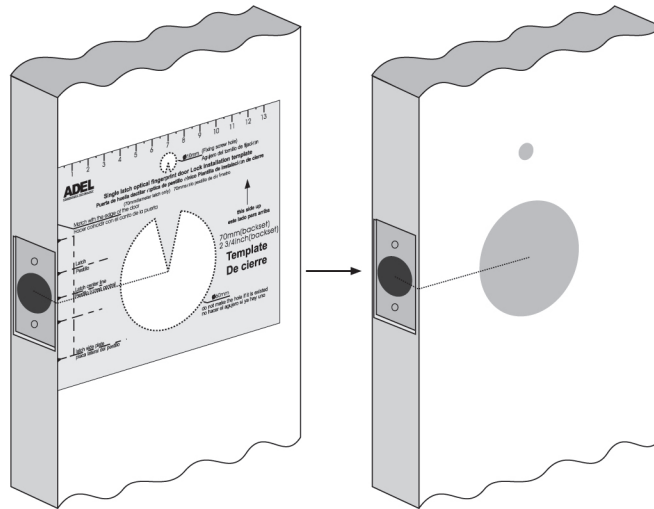


2 3/4" [70 mm] backset 2 3/4" [70mm] 模板

Door Preparation

Note: Drill from both side of the door to prevent unsightly damage.

- Determine which template fit your Trinity 788 installation (either the 2 3/8" [60mm] backset or 2 3/4" [70 mm] backset)
- Place appropriate paper template (supplied) onto door and mark for holes. Next drill the hole.



开孔方法

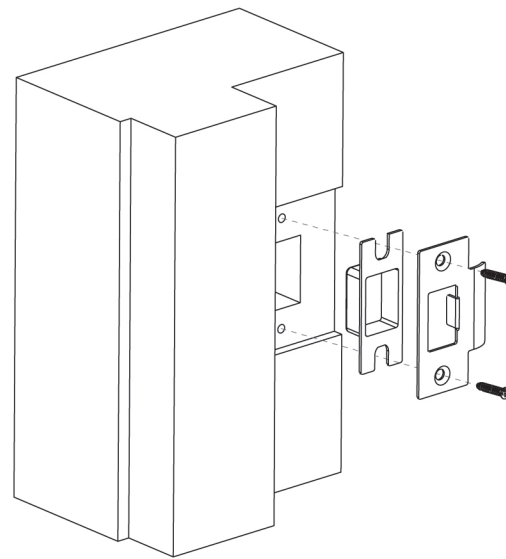
注：从门的两侧钻入以免损坏门身。

- 先确定60mm或是70mm的模板适合自己的门
- 将选好的开孔模板放于门的适当位置上，对准位置，划下位置记号。
- 按划下的位置记号钻孔。

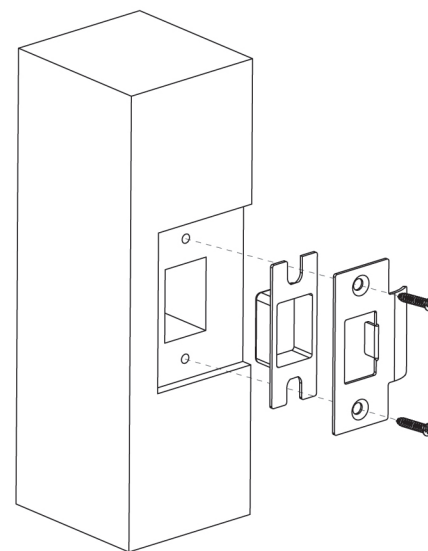
2 Installing the strike plate 安装门扣板

- Mark location of strike on the door frame, making certain that the strike opening is aligned with latch bolt.

- 根据锁芯的高度记下门扣板的适当位置
- 按记下的门扣板位置钻孔
- 将门扣板及门扣盒一并装上



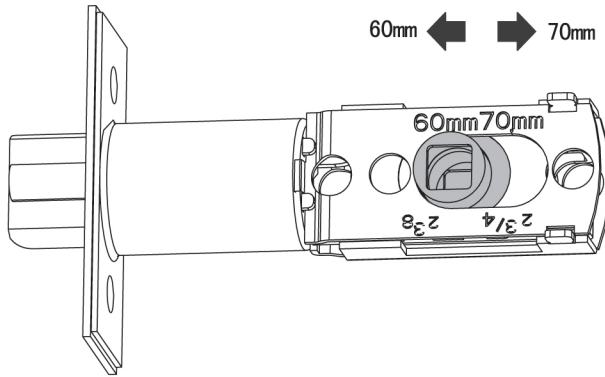
T型门安装图
Type T-door's installation diagram.



普通门安装图
General door's installation diagram

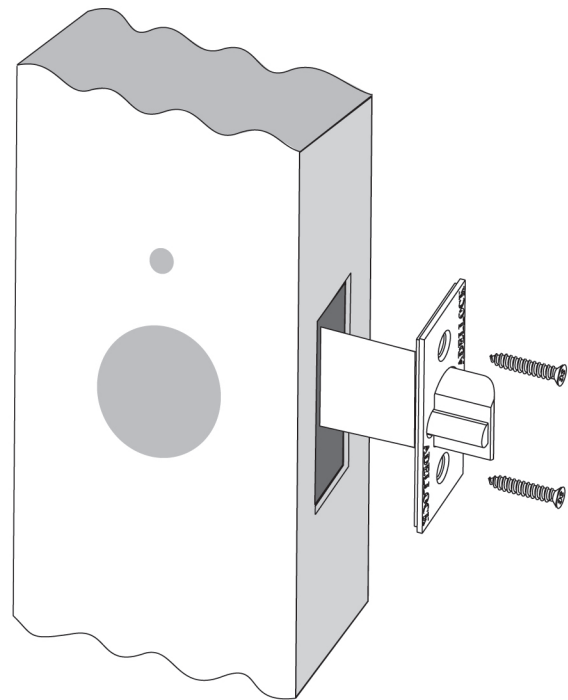
3 Installing Latch 安装锁芯

- ① 2 3/8" [60mm] backset or 2 3/4" [70 mm] backset
60mm或70mm模板

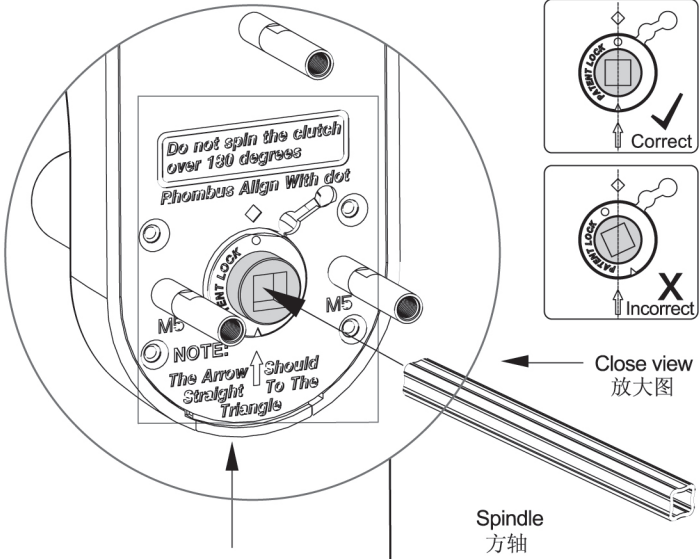


The latch has two backsets available: 2 3/8" [60mm] backset or 2 3/4" [70 mm] backset
根据已选的开孔模板调节锁芯的设定 (60mm或70mm)

- ② Secure the latch to the door using two wood screws supplied.
Latch unit face plate must be flush with door.
用固定锁芯用尖头螺丝把锁芯固定在先前钻好的孔。

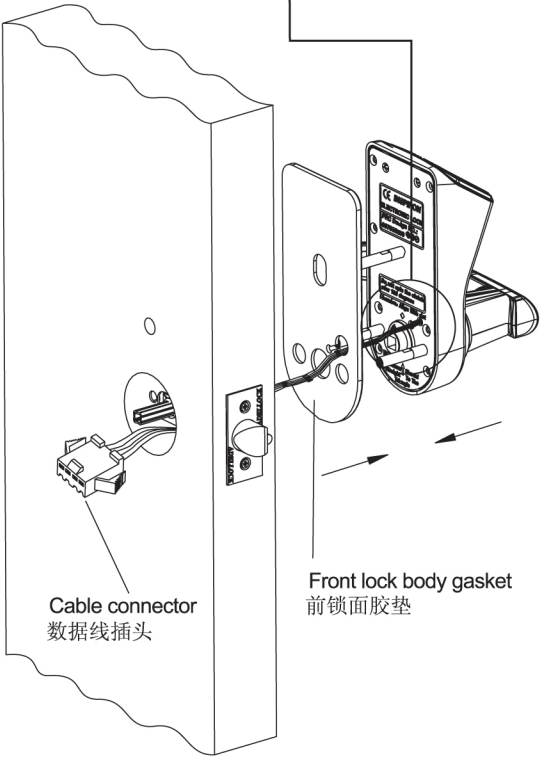


4 Installing spindle, and front lock body
安装方轴及前锁面



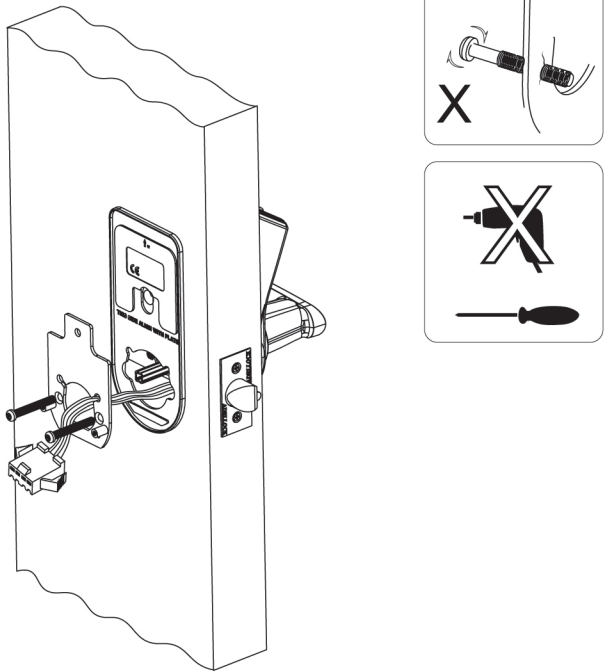
Very important note:
As the photo shows there is an arrow pointing up to the small triangle. This is the only position where the clutch can be activated during normal operation.

- 安装注意事项:
1. 将离合器上的箭咀对准锁体上的小三角标志。
2. 方轴插入离合器后不能转动。



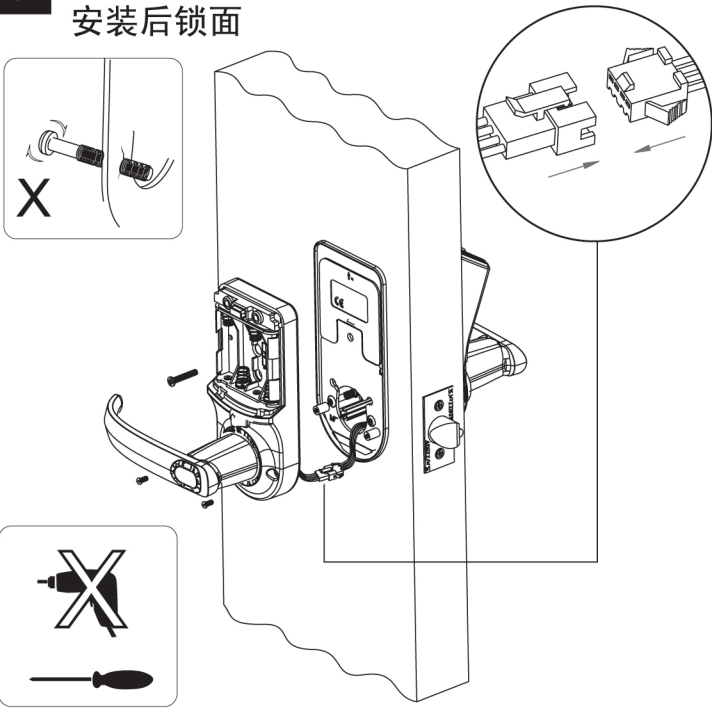
- Note:
The wire goes under the latch
注:
1. 数据线必须在锁芯下方穿过。
2. 前锁面必须与前锁面胶垫一并安装。

5 Installing the back plate and back lock body gasket
安装盖板及后锁面胶垫的安装



1. the back plate fits into the back lock body gasket,
2. secure the back plate and back lock body gasket with two M5*L screws (According to the door thickness to choose screws, please refer to the table of scews and door thickness)
1. 将安装盖板放准在锁面胶垫的特定位置上
2. 用提供的两口安装盖板用平底螺丝将安装盖板及后锁面胶垫固定在门上。

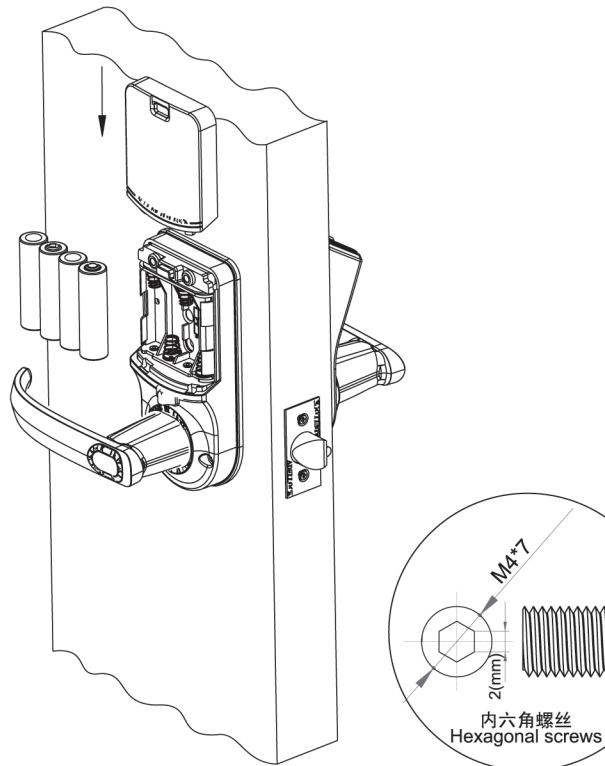
6 Installing the back lock body
安装后锁面



1. Connect the cable as shown
2. Push the wire connector into the hole under the latch
3. Secure the back lock body with two M4*8 screws and one M4*L (According to the door thickness to choose screws, please refer to the table of scews and door thickness)

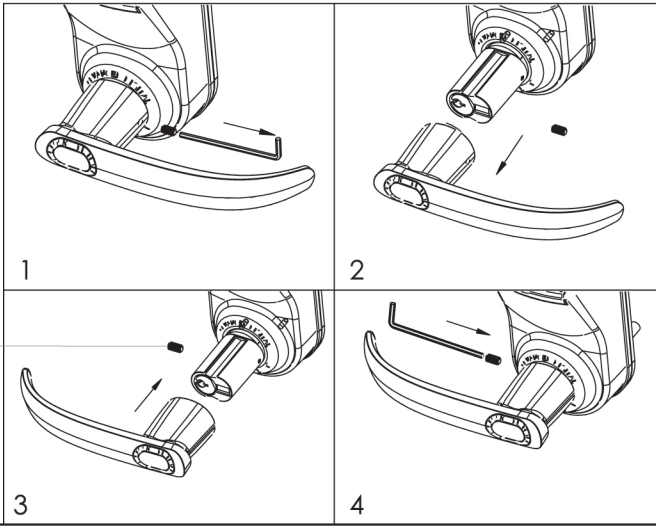
1. 先把前后锁面的数据线按图标接上
2. 将接好的数据线藏于锁芯下方的空位
3. 用提供的三口螺丝将后锁面固定 (其中一口位于电池盒内)

7 Battery
电池的安

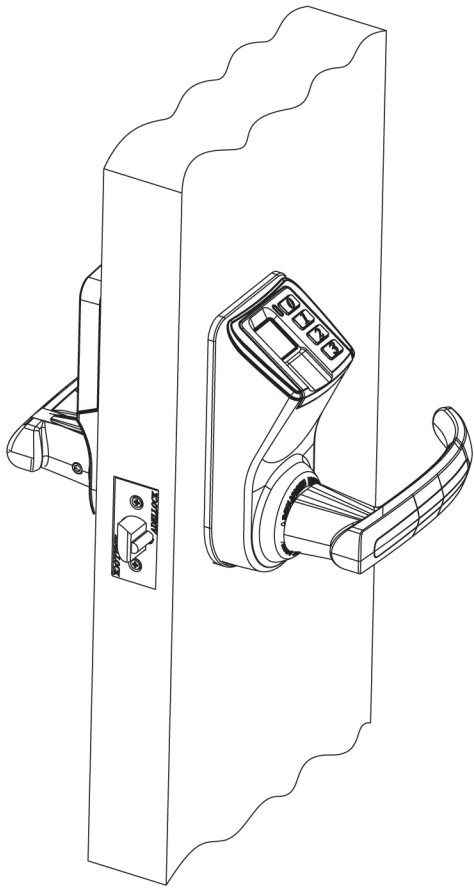


1. Put the batteries in and install the battery cover
2. Handle lever is field changeable, assemble or disassemble the handle lever with the tool supplied.
1. 装上4颗 AA电池 (留意正负极)
2. 关上电池盖

Note: field changeable handle lever
注: 可按实际需要更换把手方向



8 Testing the operation of the lock
安装后测试



1. Rotate the inside handle lever and hold. Ensure that the latch is fully retracted and flush with the latch face plate. Release the inside handle lever, the latch should be fully extended.
2. After batteries putting in the lock, it is going in a normal situation if the latch is retracted inside once rotating the indoor handle and holds it, and also the latch is fully extended once releasing the indoor handle. Please see the following diagrams in Figure 1.
3. Place your finger on the fingerprint sensor, a long beep, a green light and a motor clutch sound. Rotate the front handle lever and hold. Ensure that the latch is fully retracted.
4. With the door open, verify functionality of the mechanical key override as shown. Take off the front handle lever, insert the mechanical key, turn the key to vertical position then rotate the handle bar. Ensure the latch is fully retracted.
5. Figure 1 shows, the latch pin must not slip inside the strike box when the door is closed.

1. 检查门锁是否稳固地装在门上。
2. 接上电源后空转把手，即于后锁面按下把手不放，锁舌完全退入门中，放开门把手，锁舌自动弹出，此为正常。此时锁舌状态如下（图1）。
3. 将任一手指放于指纹窗上，指纹窗闪红灯，绿色信号灯亮，听到机器运作声后按下前把手，锁舌完全退入门中；放开门把手，锁舌自动弹出，此为正常。门锁会在5秒后自动锁上。
4. 按图示用工具取下把手，插入钥匙，将钥匙转动180度，再转动把手开门。
5. 站在门外，关上门，测试门是否自动上锁。在正常状况下，没有正确指纹，密码或钥匙是不能开门。

How to use mechanical key
应急钥匙的使用

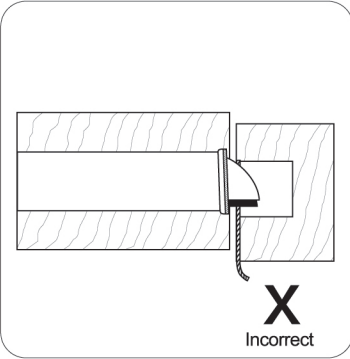
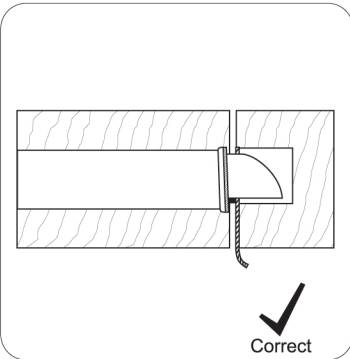
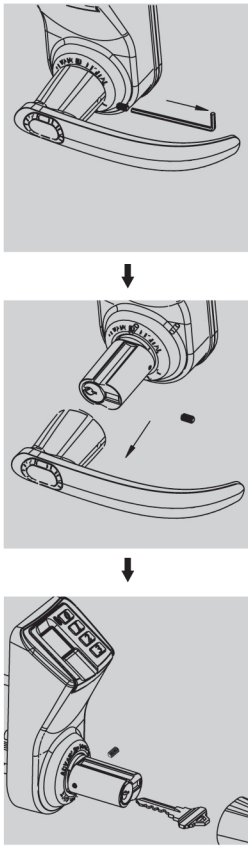


图1 (Figure 1)